

Contact Tracing

Commonwealth of Kentucky Department for Public Health

Engagement Event Presentation

Contact Tracing Overview

Kentucky is implementing Contact Tracing to help stop the spread of diseases like COVID-19 and help Kentuckians stay healthy and safe.



Contain the spread of COVID-19

Contact Tracing combines public participation and the power of technology to help public health officials and health care providers contain the spread of COVID-19.



Online tracking system

Contact Tracing allows public health workers to record individual information of Kentuckians who have been exposed to COVID-19, conduct outreach, and monitor wellness.



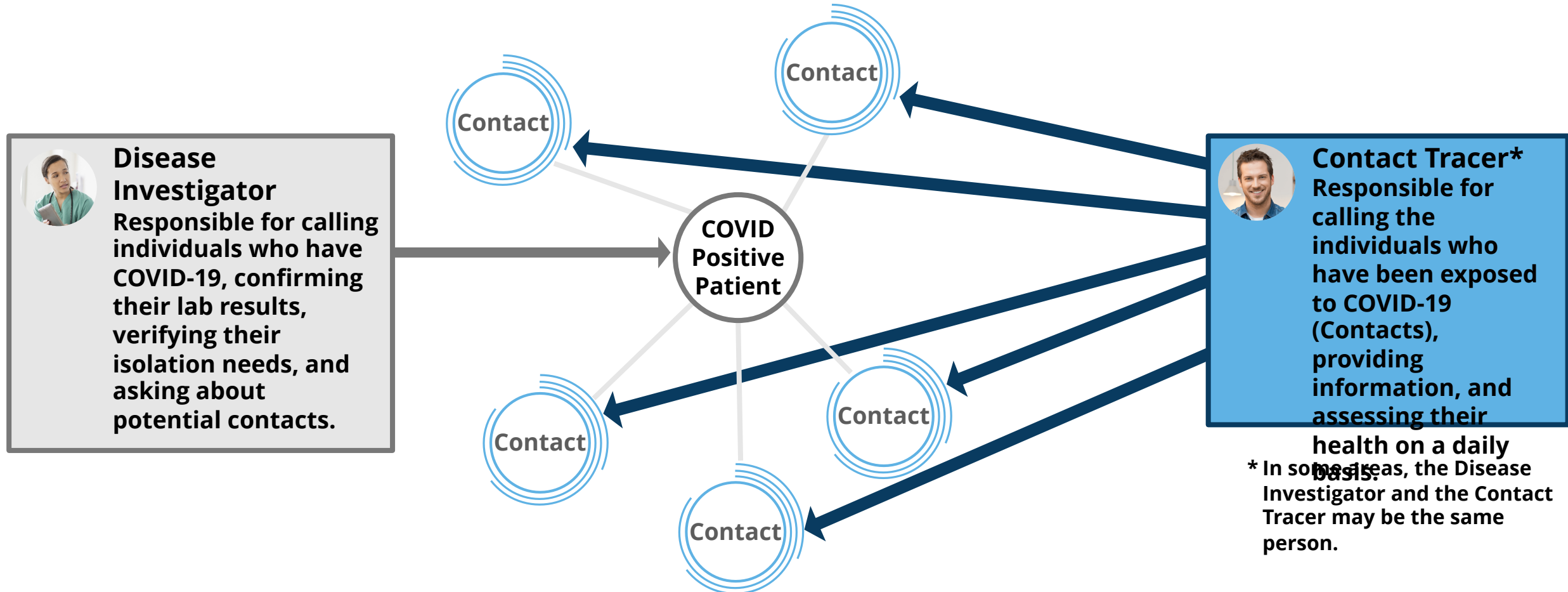
Resident wellness and safety

Kentucky Residents are contacted if they have been exposed to an individual testing positive for COVID-19 to give instructions on how to self-quarantine and help reduce the spread to other individuals.

Contact Tracing is the safe way to bring people back to work and help reopen the economy.

Contact Tracing Roles and Responsibilities

Public Health workers need to know about exposures to make sure that all Kentuckians are safe and supported. We are using Kentucky's Contact Tracing and Tracking system to help our Disease Investigators and Contact Tracers gather the necessary information.



Another role you may hear about is a Social Support Coordinator. These coordinators will help ensure that patients and/or contacts have their needs, such as medicine and groceries, met.

Contact Tracing Guidelines

CONTACT TRACERS WILL ASK

- ☒ Places you have visited for the past few days
- ☒ General health information to determine risk and help monitor potential symptoms
- ☒ The names and contact information of people you have been in close contact with

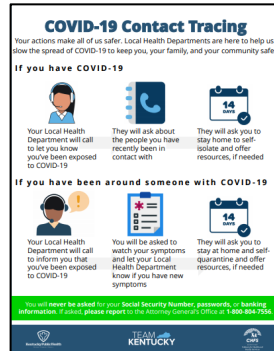
CONTACT TRACERS WILL NOT ASK

- ☐ Social Security Number
- ☐ Passwords
- ☐ Banking Information/Payments
- ☐ Immigration status

If asked for this information, hang up and report it to the Attorney General's Office at 1-800-804-7556.

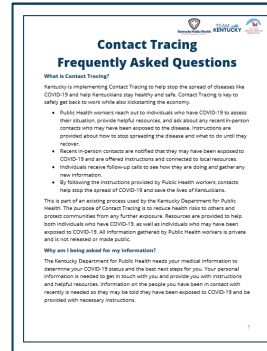
Key Materials for Distribution

The Contact Tracing and Tracking communications team has developed and published written materials and videos for Kentuckians. The below materials can be found on kycovid19.ky.gov.



Contact Tracing One Pager

High-level introduction of Contact Tracing in Kentucky



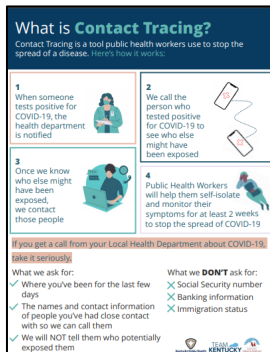
Contact Tracing Frequently Asked Questions

Most-asked Contact Tracing questions regularly updated



Contact Tracing: Your Action Matters

High-level overview of spread of COVID-19 and importance of Contact Tracing



Contact Tracing: How it Works

High-level overview of Kentucky Contact Tracing process



Contact Tracing Infographic

Resource for LHD and Contact Tracing staff



Contact Tracing PSA Toolkit

Packet for local leaders, influencers, and opinion leaders to promote Contact Tracing

Please check kycovid19.ky.gov as new materials are posted regularly

Your Role in Contact Tracing

To help with this effort, you can: _____



Make audiences aware that they may be contacted by a Public Health worker to gather information as it pertains to the virus



Help audiences understand the importance of this process, encourage them to answer these calls, and follow instructions provided



Provide audiences with any materials as they are made available



Be on the look-out to share communications from kycovid19.ky.gov and Governor Beshear's social media

Together, we can: _____

Enable public health organizations to collect information about COVID-19 throughout the Commonwealth to reduce the risk of spreading to others



Communicate the importance of Contact Tracing to support bringing people back to work and reopening Kentucky's economy



TEAM KENTUCKY
NEEDS YOU

QUESTIONS?